



316 Stainless Steel Phillips Flat Head Screws

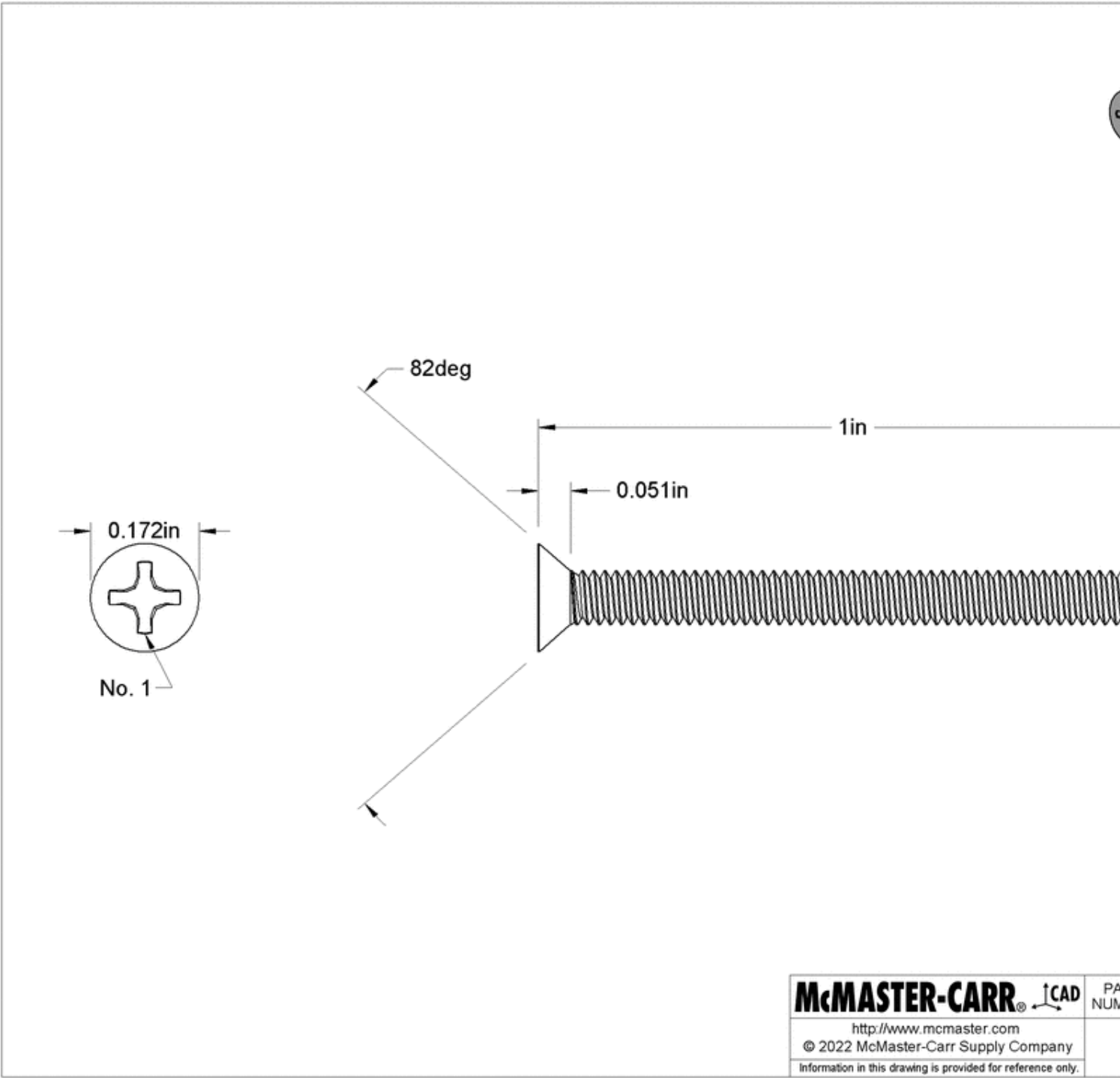
2-56 Thread Size, 1" Long



\$9.60 per pack of 100  
91500A305

Thread Size	2-56
Length	1"
Threading	Fully Threaded
Flat Head Profile	Standard
Head Diameter	0.172"
Head Height	0.051"
Countersink Angle	82°
Drive Style	Phillips
Drive Size	No. 1
Material	316 Stainless Steel
Finish	Passivated
Hardness	Rockwell B80
Tensile Strength	70,000 psi
Thread Type	UNC
Thread Spacing	Coarse
Thread Fit	Class 2A
Thread Direction	Right Hand
Head Type	Flat
System of Measurement	Inch
Specifications Met	ASME B18.6.3
RoHS	RoHS 3 (2015/863/EU) Compliant
REACH	REACH (EC 1907/2006) (11/07/2024, 242 SVHC) Compliant
DFARS	Not Specialty Metals Compliant
Country of Origin	Taiwan
Schedule B	731815.9000
ECCN	EAR99

More corrosion resistant than 18-8 stainless steel screws, these screws have excellent resistance to chemicals and salt water. They're passivated for added protection against oxidation and corrosion, and they may be mildly magnetic. Screws are angled under the head to sit flush within countersunk holes. Length is measured from the top of the head.



The information in this 3-D model is provided for reference only.